



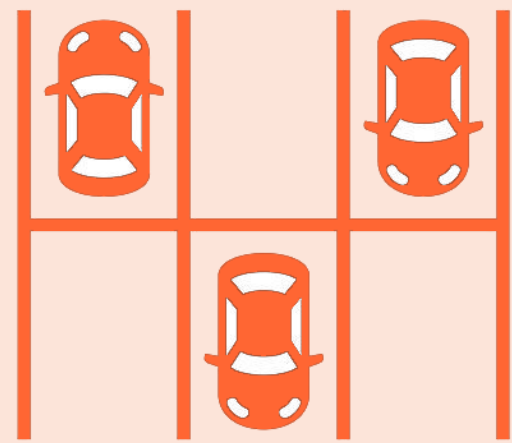
# Snapology

2020 Summer Camps

## Building a Safe Experience

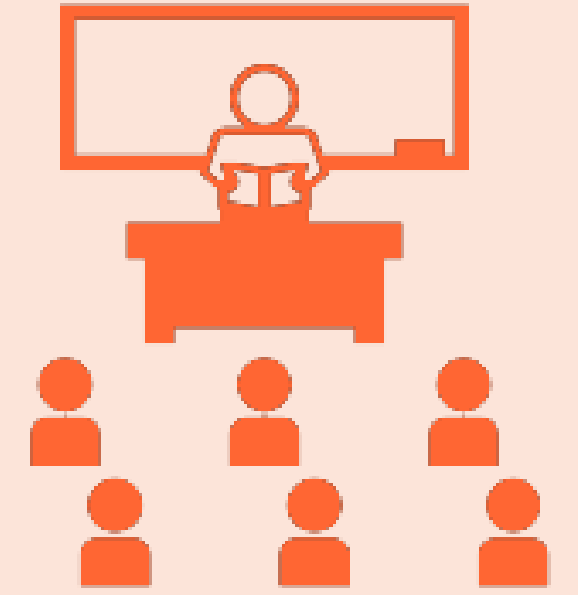
### Socially Distant Drop-Off & Pick up

Families should line up 6 feet apart and should allow extra time for drop-off & pick up procedures.



### Smaller Classes

We are keeping each group small, with no more than 10 campers to allow space for social distancing at all times.



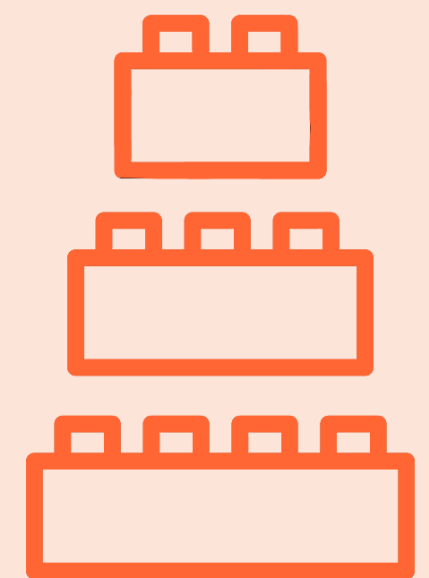
### Temperature Checks

No-touch thermometers will be used for camper and staff temperature checks at the start of camp. Anyone with any sick symptoms should stay home.



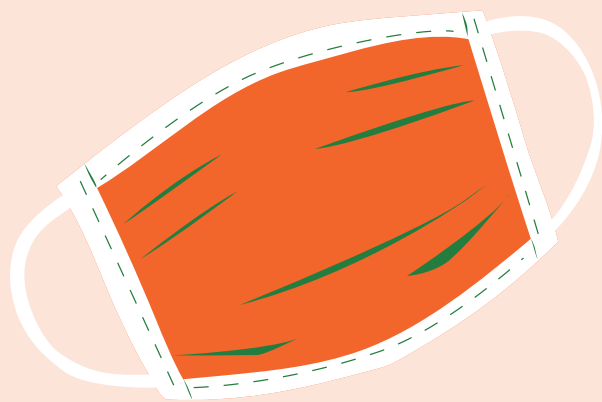
### Individual Materials

Each child will work in their own area with their own unique and sanitized materials.



### Masks

Students and anyone entering our facility will need to wear a mask for drop-off and pickup. Snapology staff will wear masks when social distancing is not permitted working closely with a child.



Creative play will not be permitted at this time, instead students will play with one toy at a time.

### Strict Sanitation

Our staff will be continuously sanitizing materials, classrooms, restrooms with special attention to high touch surfaces. All materials will be sanitized between sessions.



### Frequent Hand Washing

Campers and staff will wash hands upon arrival and will be taking breaks throughout the day to wash their hands. Hand sanitizer will be available.

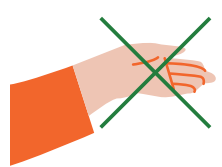




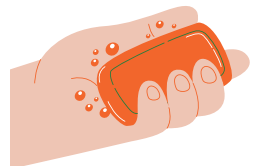
# Building A Safe Experience

Snapology Staff Protocol

## Practice good hygiene



Follow **contactless** drop-off and pick-up guidelines



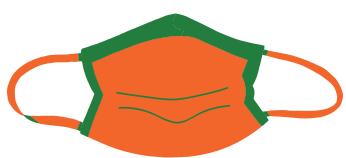
**Wash your hands** often with soap and water for at least 20 seconds



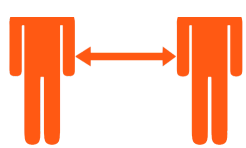
**Disinfect surfaces** like doorknobs, tables, and desks regularly



**Avoid touching your face** and cover your coughs and sneezes with tissue



**Wear a mask** during drop-off and pickup and when working closely with students



**Practice social distancing** staying 6 feet away from others

## Follow In-Class Guidelines



Wear a protective mask if interacting within 6 feet

Students should be spaced 6 feet apart at all times

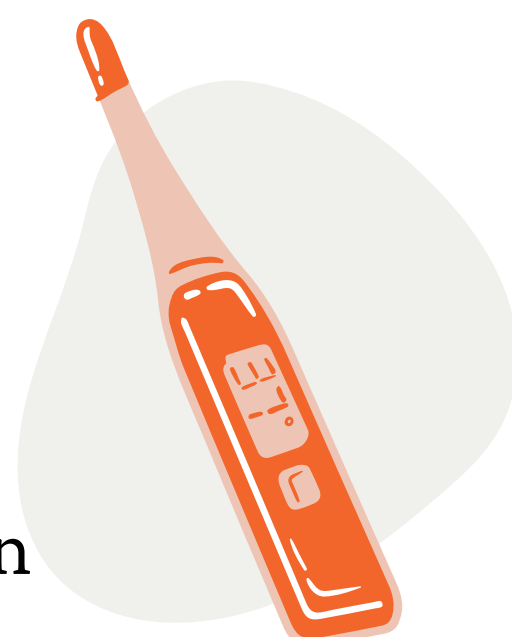
Each child will build alone or with siblings

Campers will use the same materials throughout the week

Children with fever or visible symptoms should not participate in activities and notify parents immediately

## Stay home if...

- You are **feeling sick**
- You have a **temperature**
- You may have come in contact with someone **exposed**



## Take care of your emotional and mental well-being

Outbreaks are a stressful and anxious time for everyone. Please be safe and limit your possible exposure outside of work.